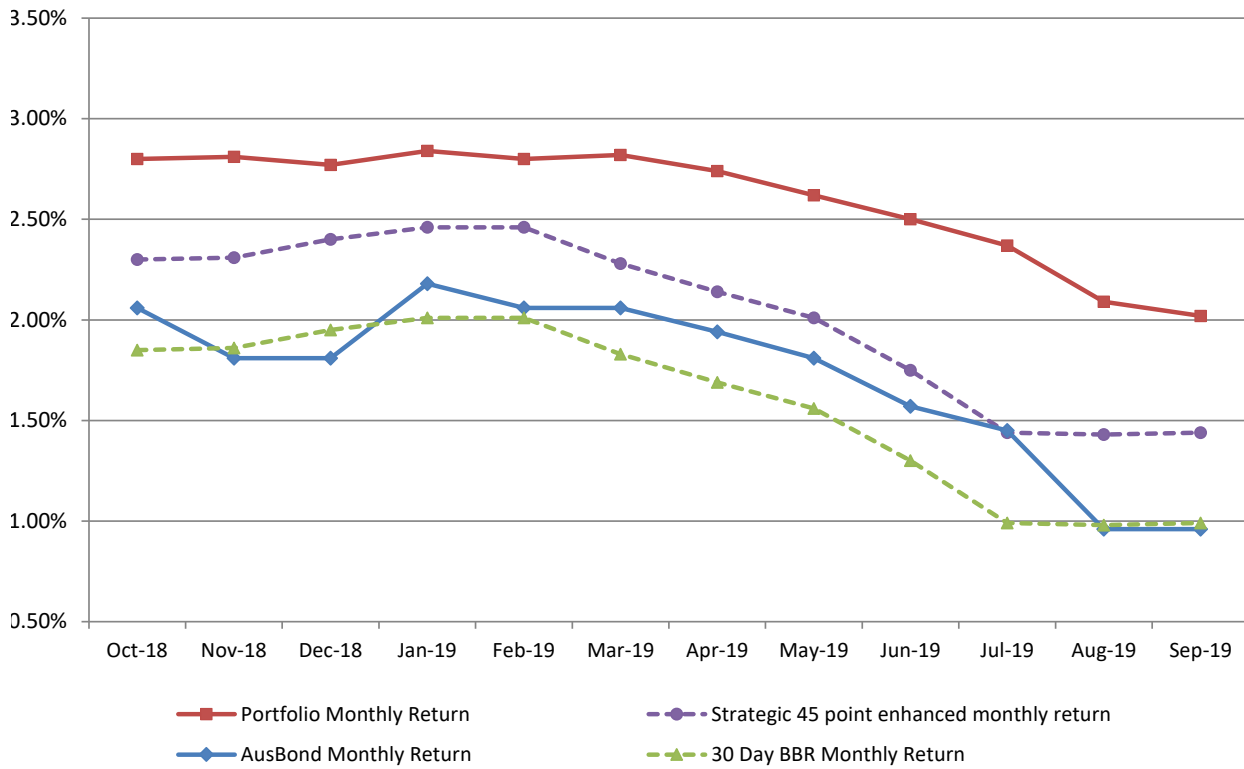


Attachment B

**Investment Performance as at
30 September 2019**

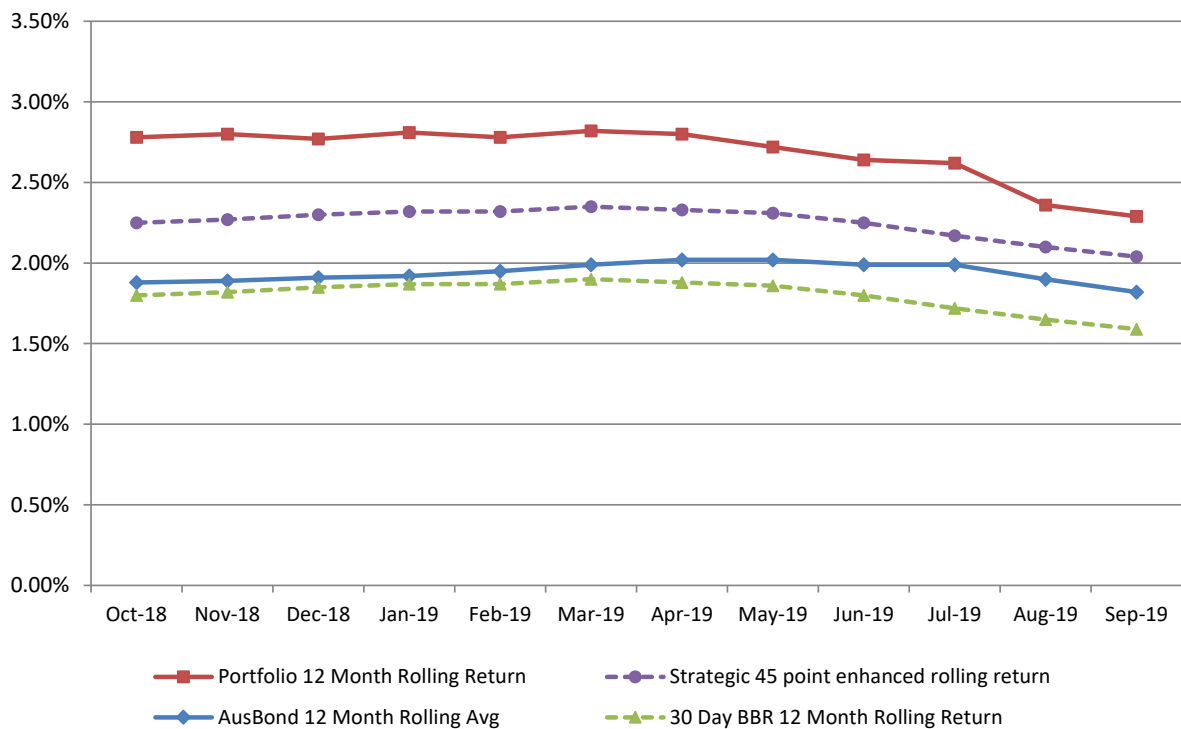
Monthly Results

Actual Portfolio vs Strategic Enhanced Benchmark vs AusBond Benchmark vs 30 Day BBR Benchmark
September 2019

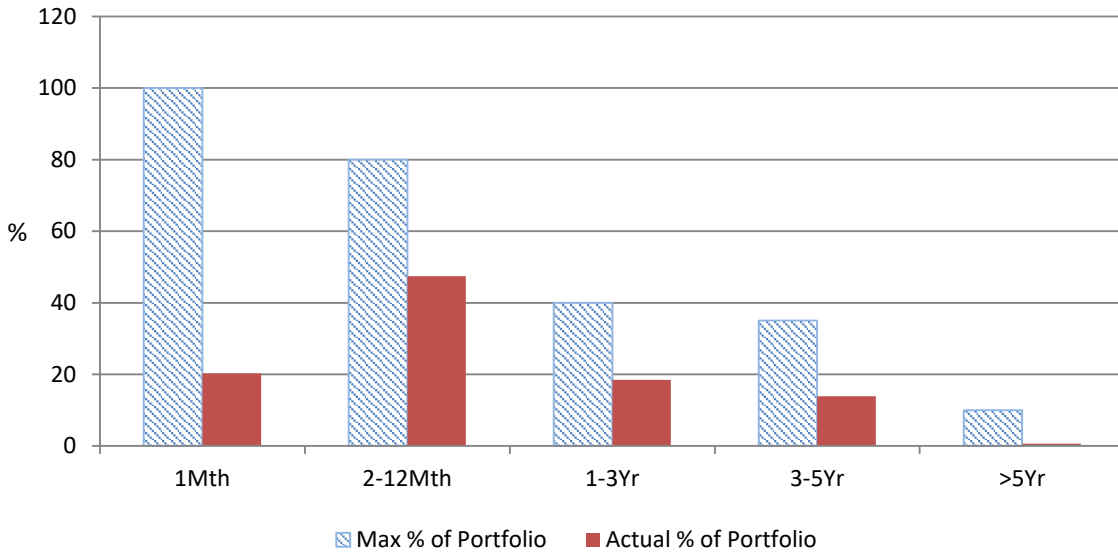


12 Month Rolling Averages

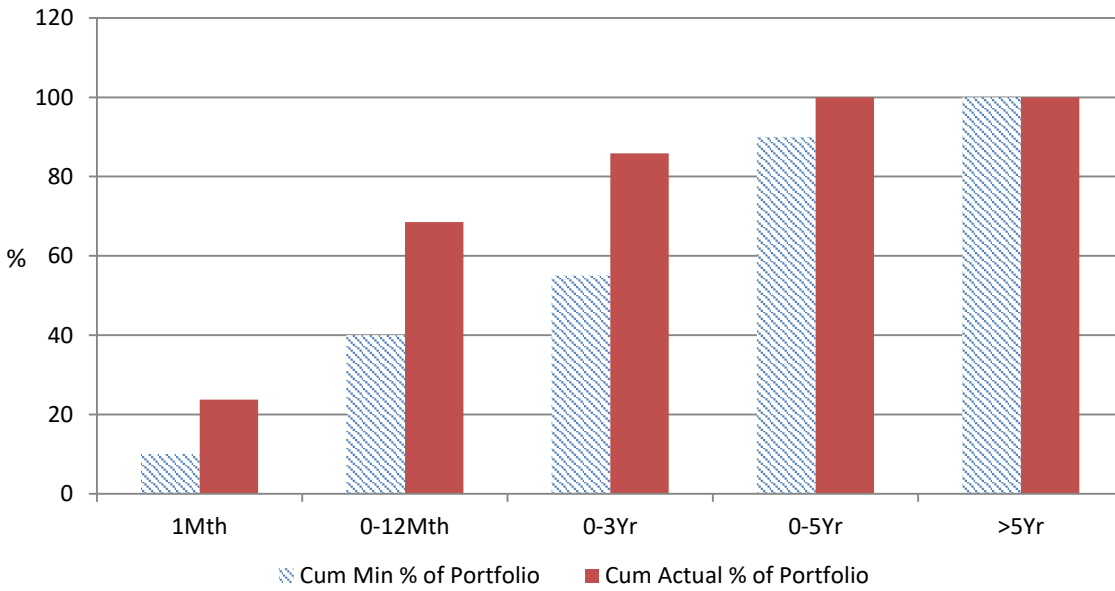
Actual Portfolio vs Strategic Enhanced Benchmark vs AusBond Benchmark vs 30 Day BBR Benchmark



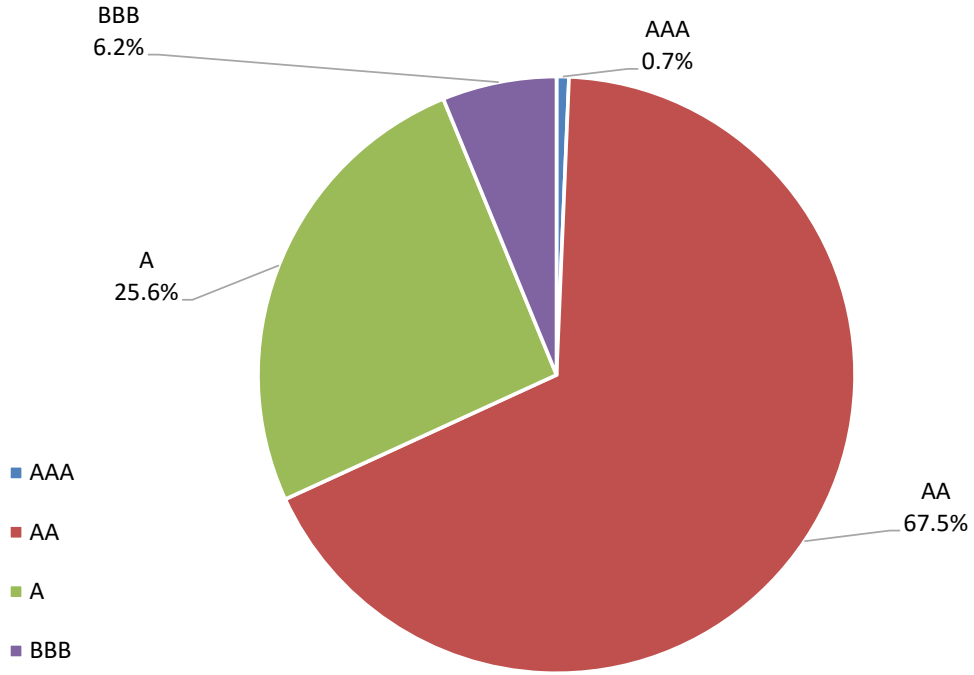
% Liquidity - Maximum Allowances as at 30 September 2019



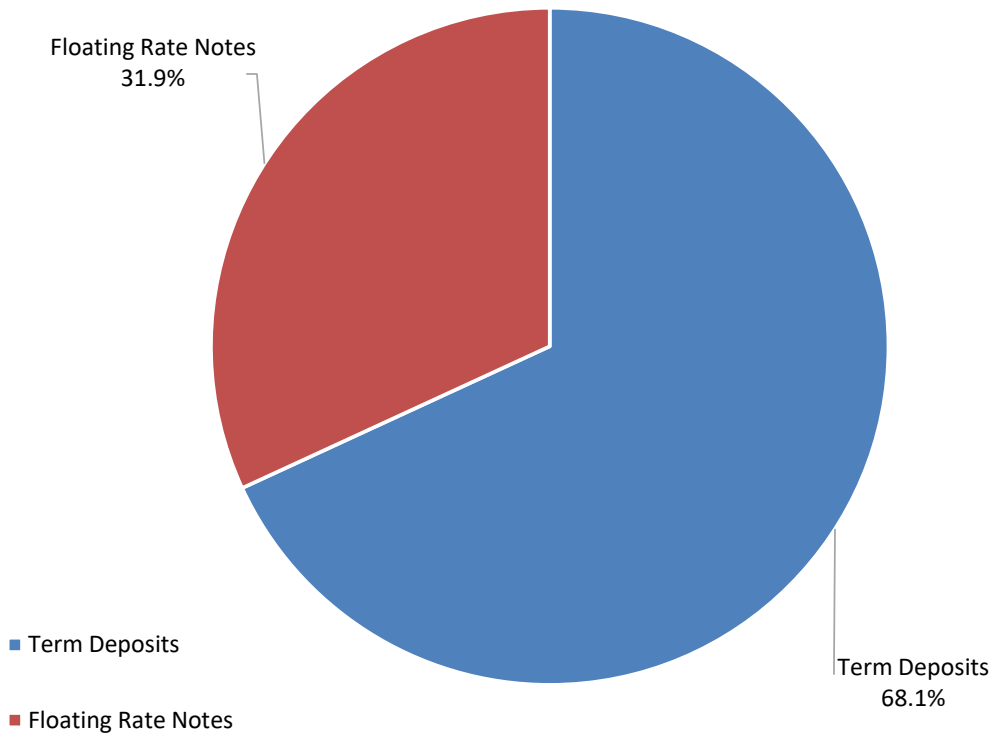
% Liquidity - Minimum Allocations as at 30 September 2019



Risk Profile as at 30 September 2019



Investment Product Profile as at 30 September 2019



**INVESTMENT AND CASH DISTRIBUTION BY FINANCIAL INSTITUTION
AS AT 30 SEPTEMBER 2019**

Institution Category	Financial Institution	Amount \$M	Financial Inst. %	Institution Cat. %
Australian Big 4 Bank (and related institutions)	ANZ Bank	48.0	7.0	
	Commonwealth Bank-related:	158.1	22.9	
	<i>Bankwest</i>	<i>65.0</i>	<i>9.4</i>	
	<i>Commonwealth Bank</i>	<i>93.1</i>	<i>13.5</i>	
	National Aust Bank	95.7	13.9	
	Westpac Banking Corporation	168.6	24.4	
Big 4 Total		470.4		68.2
Other Australian ADIs and Australian subsidiaries of foreign institutions	AMP Bank Ltd	5.0	0.7	
	Bank of China - Sydney Branch	4.5	0.7	
	Bank Of Queensland	24.0	3.5	
	Bendigo and Adelaide Bank	40.0	5.8	
	CUA Limited	21.5	3.1	
	Greater Bank	5.0	0.7	
	Heritage Bank	3.5	0.5	
	IMB	10.0	1.4	
	Members Equity Bank	47.8	6.9	
	Newcastle Permanent Building Society	12.5	1.8	
Royal Bank of Canada - Sydney	5.0	0.7		
Suncorp Bank	41.0	5.9		
Other ADI Total		219.8		31.8
Grand Total		690.1	100.0	100.0